

# FICHA TÉCNICA TECHNICAL DATA

# ACCESORIOS PARA CABLE DE MEDIA TENSION MEDIUM-VOLTAGE CABLE ACCESSORIES EN 50180 / IEEE 386 INTERFACE

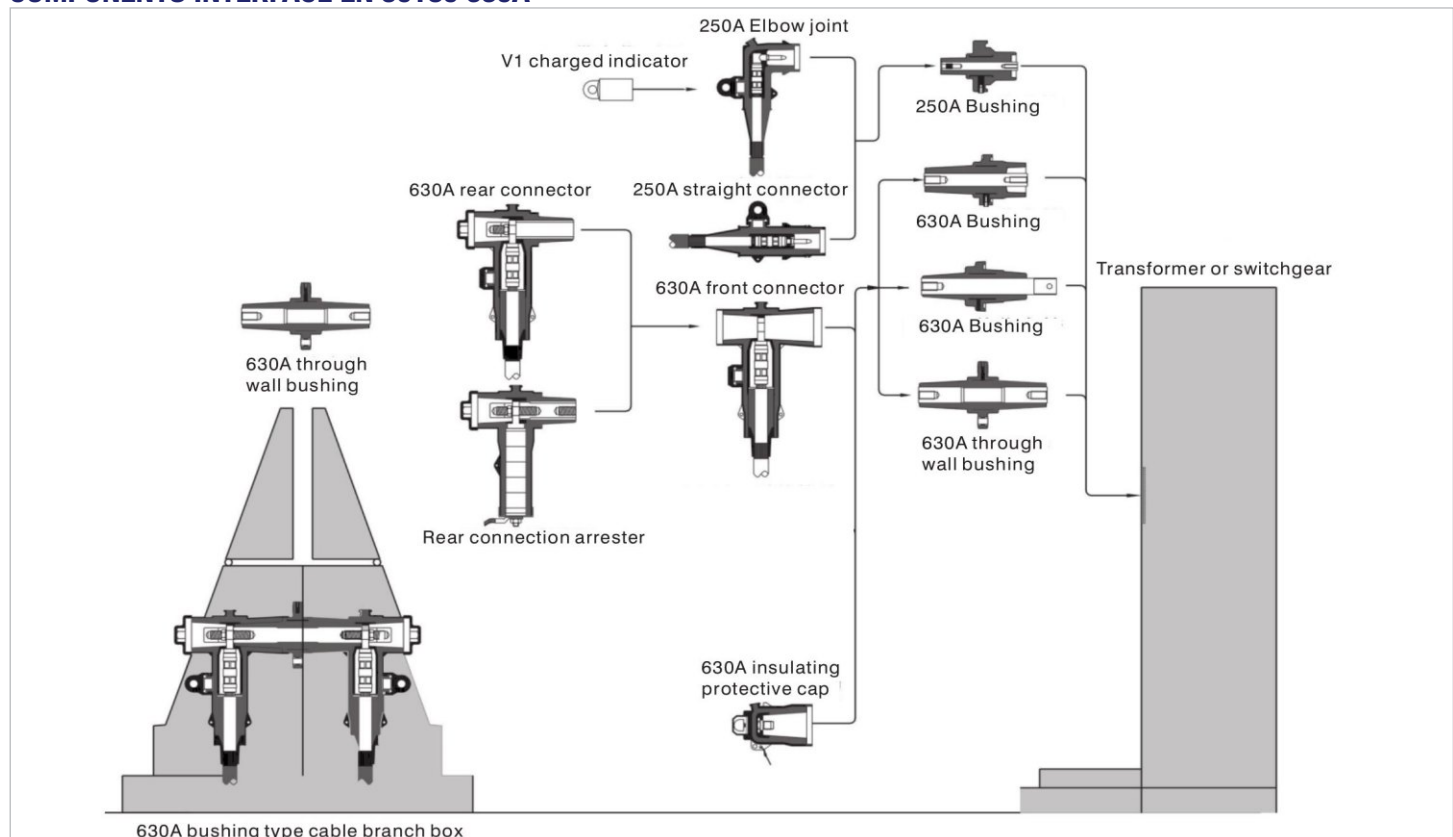
INDUCON ENERGY, distribuye componentes, elementos pre-moldeados, conectores separables, uniones de cables, terminaciones, etc, que han sido diseñados y probados según las norma IEC 60502-4: 2023.

INDUCON ENERGY, distributes components, pre-molded elements, separable connectors, cable joints, terminations, etc., which have been designed and tested according to IEC 60502-4: 2023. standards.

- Ensayo de accesorios para cables con tensiones nominales de 6 a 36kV (Um 7,2kV hasta Um 36 kV) (IEC 60502-4).
- Pasatapas aislados para tensiones hasta 36kV (IEC 60137).
- Descargadores de sobretensión óxido metálico (IEC 60099-4).
- Testing of accessories for cables with nominal voltages of 6 to 36kV (Um 7,2kV to Um 36 kV) (IEC 60502-4).
- Insulated bushings for voltages up to 36kV (IEC 60137).
- Metal oxide surge arresters (IEC 60099-4).

	Test Voltage	Rated voltage U <sub>0</sub> / U(U <sub>m</sub> ) kV			
		U <sub>0</sub> = Rated voltage phase to earth	U = Rated voltage phase to phase	U <sub>m</sub> = Maximum system voltage	
		8.7/15 (17.5)	12/20 (24)	18/30 (36a)	20,8/36 (36b)
Humidity and salt fog	1.25 U <sub>0</sub>	11	15	22.5	32.5
Partial discharge	1.73 U <sub>0</sub>	15	20	30	45
Heating cycles 30 in air and 30 cycles under water and AC voltage / 15 min and 500 h	2.5 U <sub>0</sub>	22	30	45	64
DC voltage / 15 min	4 U <sub>0</sub>	35	48	72	104
AC voltage / 5 min	4.5 U <sub>0</sub>	39	54	81	117
Impulse (peak)	-	95	125	170	200
Series 630A - Short circuit thermal stable current				≥ 20 kA @ 2 s	

## COMPONENTS INTERFACE EN 50180 630A



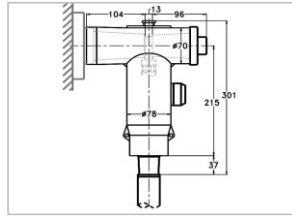
# FICHA TÉCNICA TECHNICAL DATA

# ACCESORIOS PARA CABLE DE MEDIA TENSION MEDIUM-VOLTAGE CABLE ACCESSORIES EN 50180 INTERFACE

**24 kV BIL 125 Elbow connector 630 A (Front) Interface C EN 50180**



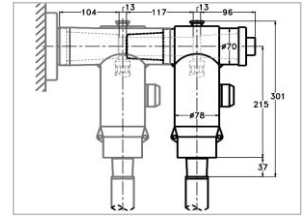
EC-624-XYZ



**24 kV BIL 125 Elbow connector 630 A (Rear) Interface C EN 50180. XYZ=Cable Data ordering information**



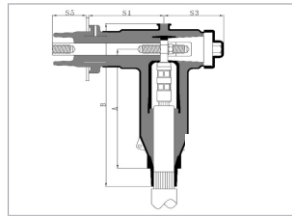
ECR-624-XYZ



**36 kV BIL 170 Elbow connector 630A (Front) Interface C EN 50180. XYZ=Cable Data ordering information**



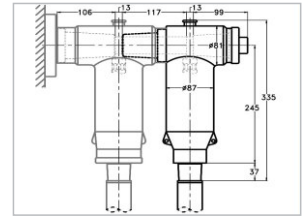
EC-630-XYZ



**36 kV BIL 170 Elbow connector 630A (Rear) Interface C EN 50180. XYZ=Cable Data ordering information**



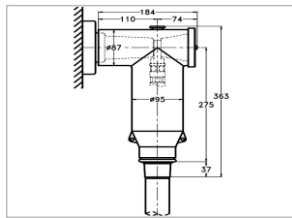
ECR-630-XYZ



**36 kV BIL 200 Elbow connector 630A (Front) Interface C EN 50180. XYZ=Cable Data ordering information**



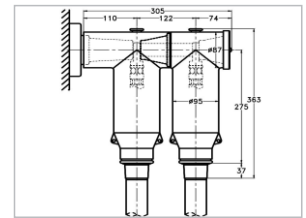
EC-635-XYZ



**36 kV BIL 200 Elbow connector 630A (Rear) Interface C EN 50180. XYZ=Cable Data ordering information**



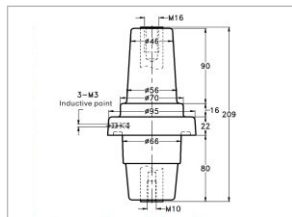
ECR-635-XYZ



**24 kV Bushing Interface C EN 50180**



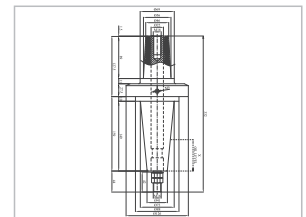
IBU-624



**36 kV BIL 170 Bushing 630A Interface C EN 50180**



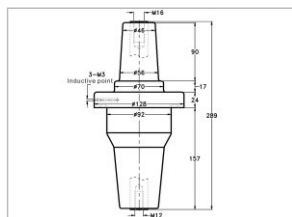
IBU-630



**36 kV BIL 200 Bushing 630A Interface C EN 50180**



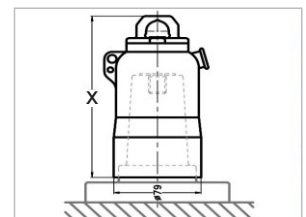
IBU-635



**Insulated Cap 630A Interface C EN 50180**



CAP-624  
CAP-630  
CAP-635  
CAP-672



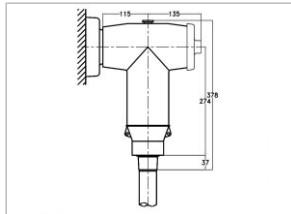
# FICHA TÉCNICA TECHNICAL DATA

## ACCESORIOS PARA CABLE DE MEDIA TENSION MEDIUM-VOLTAGE CABLE ACCESSORIES EN 50180 INTERFACE

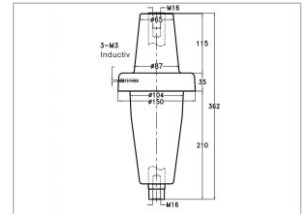
72 kV BIL 350 Elbow connector 630A (Front) Interface F  
EN 50180. XYZ=Cable Data ordering information



EC-672-XYZ



IBU-672



# FICHA TÉCNICA TECHNICAL DATA

# ACCESORIOS PARA CABLE DE MEDIA TENSION MEDIUM-VOLTAGE CABLE ACCESSORIES EN 50180 INTERFACE

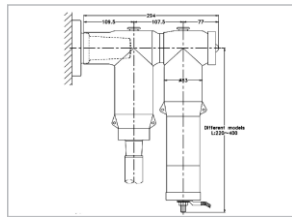
Performance parameters of rear arresters

Inducon Reference	DPS-24-X	DPS-36a-X	DPS-36b-X
Rated Voltage	26kV	34kV	36kV
MCOV (Up to)	20.8kV	27.2kV	40.8kV
Nomina Discharge Current	5kA	5kA	5kA
Impulse @ 8/20 $\mu$ s	66kV	85kV	134kV

## 24 kV Elbow Arrester Interface C EN 50180 X=MCOV



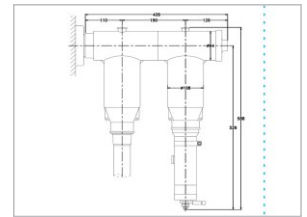
DPS-24-X



## 36a kV Elbow Arrester Interface C EN 50180 X=MCOV



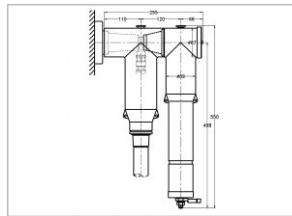
DPS-36a-X



## 36b kV Elbow Arrester Interface C EN 50180 X=MCOV



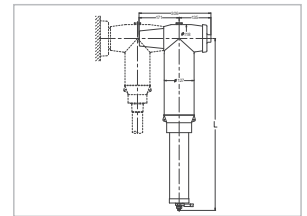
DPS-36b-X



## 72 kV Elbow Arrester Interface F EN 50180 X=MCOV



DPS-72-X



# FICHA TÉCNICA TECHNICAL DATA

# ACCESORIOS PARA CABLE DE MEDIA TENSION MEDIUM-VOLTAGE CABLE ACCESSORIES IEEE 386 INTERFACE

INDUCON ENERGY, distribuye componentes, elementos pre-moldeados, conectores separables, uniones de cables, terminaciones, etc, que han sido diseñados y probados según las normas aplicables de IEEE.

INDUCON ENERGY, distributes components, pre-moulded elements, separable connectors, cable joints, terminations, etc., which have been designed and tested according to applicable IEEE standards.

- Norma IEEE 386 para conectores separables
- Norma IEEE 592 para blindajes semiconductores expuestos
- IEEE 386 standard for separable connectors
- IEEE 592 Standard for Exposed Semiconductor Shields

IEEE 386	Clase 15 kV	Clase 25 kV	Clase 36 kV
Voltage class phase to ground/phase to phase	8.3/14.4 kV	15.2/26.3 kV	21.1/36.6
BIL - 1.2 x 50 microsecond wave pulse	95kV	125kV	200kV
AC withstand voltage / 1 minutes.	34kV	40kV	95kV
Partial Discharge	11kV @ 5pC	19kV @ 5pC	26kV @ 5pC
Series 200A - Short circuit thermal stable current	>=10 kA @ 0.6 s		
Series 600A - Short circuit thermal stable current	>= 30 kA @ 2 s		

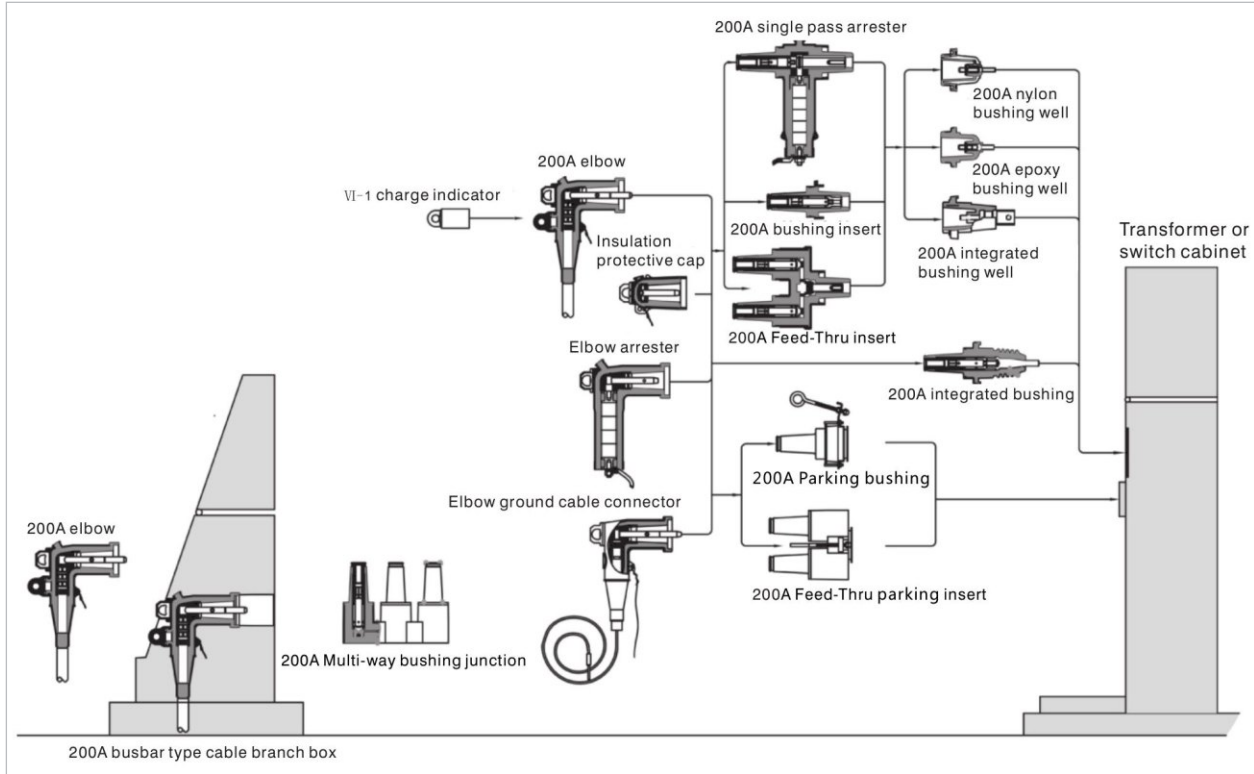
## Performance IEEE according Table B.1-IEEE versus IEC voltage ratings (pag. 72)

Screened (shielded) separable connectors rated voltages (kV)									
Interface IEEE Std 386					Interface IEC 60502-4 (Table 8 [B10] CENELEC HD 629.1 S2 (Table 7 [B7]))				
Rated voltages $U_{LG} / U_{LL}$ (Class)	Partial discharge voltage 5 pC max	Current cycle voltage	AC withstand voltage (1 min)	Impulse withstand voltage (3 shots)	Rated voltages $U_o / U (U_m)$	Partial discharge voltage $1.73 U_o$ 10 pC max	Current cycle voltage $2.5 U_o$	AC withstand voltage $4.5 U_o$ (5 min.)	Impulse withstand voltage (10 shots)
—	—	—	—	—	6 / 10 (12)	10	15	27	75
—	—	—	—	—	6.35 / 11 (12)	11	16	28.5	95
8.3 / 14.4 (15)	11	0	34	95	8.7 / 15 (17.5)	15	23	39	95
15.2 / 26.3 (25)	19	0	40	125	12 / 20 (24)	20	30	54	125
16.2 / 28 (28)	21.5	0	45	125	12.7 / 22 (24)	22	32	57	125
21.1 / 36.6 (35)	26	0	50	150	18 / 30 (36)	30	45	81	170
—	—	—	—	—	19 / 33 (36)	33	47.5	85.5	194
—	—	—	—	—	20.8 / 36 (42)	36	52	93.5	200

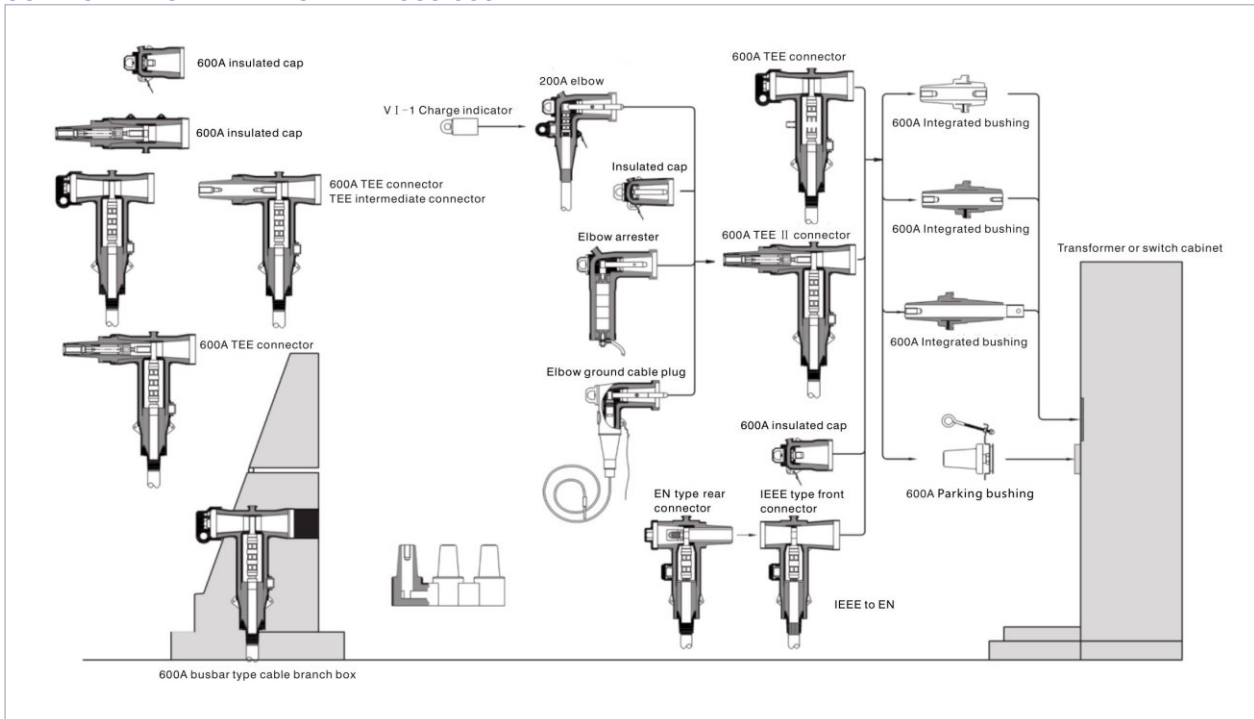
# FICHA TÉCNICA TECHNICAL DATA

# ACCESORIOS PARA CABLE DE MEDIA TENSION MEDIUM-VOLTAGE CABLE ACCESSORIES IEEE 386 INTERFACE

## COMPONENTS INTERFACE IEEE 386 200A



## COMPONENTS INTERFACE IEEE 386 600A



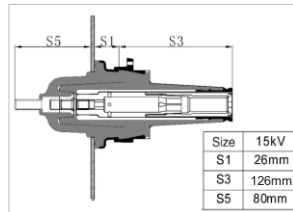
# FICHA TÉCNICA TECHNICAL DATA

# ACCESORIOS PARA CABLE DE MEDIA TENSION MEDIUM-VOLTAGE CABLE ACCESSORIES IEEE 386 INTERFACE

## 15 kV Bushing Insert 200A Interface 5 IEEE 386



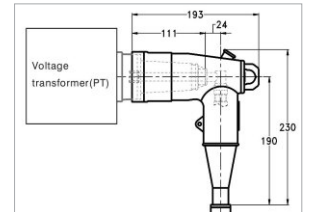
IBU-215



## 15 kV Elbow connector 200A Interface 5 IEEE 386. XYZ=Cable Data ordering information



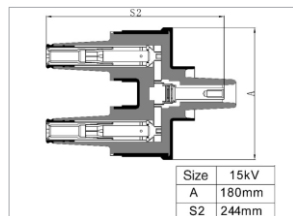
EC-215-XYZ



## 15 kV Feedthru Insert 200A Interface 5 IEEE 386



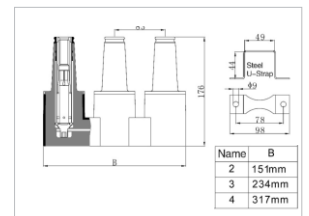
FIBU-215



## 15 kV Junction Interface 200A Interface 5 IEEE 386. X=Outlets



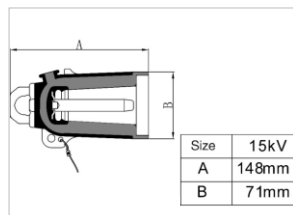
LBJ-215-X



## 15 kV Insulated Cap 200A Interface 5 IEEE 386



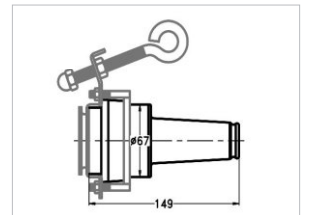
CAP-215



## 15 kV Parking Bushing 200A Interface 5 IEEE 386



PIBU-215



## 15 kV Grounding connector 200A Interface 5 IEEE 386



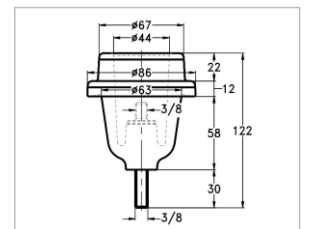
GC-215



## 15/25 kV Bushing Well 200A Interface 3 IEEE 386



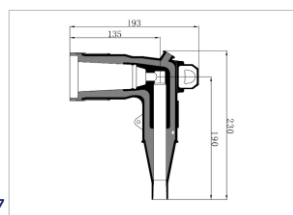
BW-225



## 25 kV Elbow connector 200A Interface 7A IEEE 386. XYZ=Cable Data ordering information



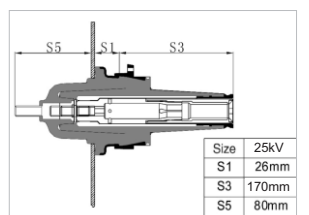
EC-225-XYZ



## 25 kV Bushing Insert 200A Interface 7A IEEE 386



IBU-225



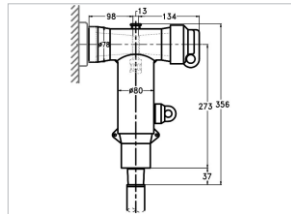
# FICHA TÉCNICA TECHNICAL DATA

# ACCESORIOS PARA CABLE DE MEDIA TENSION MEDIUM-VOLTAGE CABLE ACCESSORIES IEEE 386 INTERFACE

**15/25 kV Elbow T connector 600A Interface 11  
IEEE 386. XYZ=Cable Data ordering information**



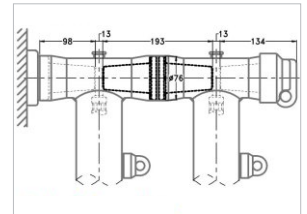
EC-625-XYZ



**15/25 kV Intermediate Joint 600A Interface 11  
IEEE 386. XYZ=Cable Data ordering information**



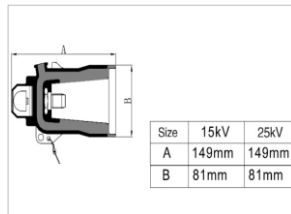
IJ-625



**15/25 kV Insulated Cap 600A Interface 11 IEEE 386**



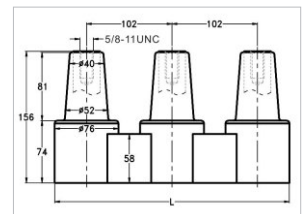
CAP-625



**15/25 kV Junction 600A Interface 11 IEEE 386.  
X=Outlets**



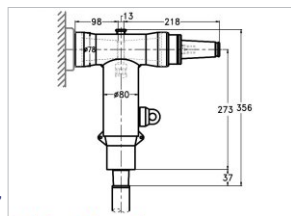
LBJ-625-X



**15/25 kV Elbow + reductor 600A Interface 11 to 200A  
Interface 5 IEEE 386.**



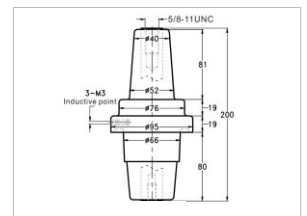
ECR-625-XYZ



**15/25 kV Bushing 600A Interface 11 IEEE 386**



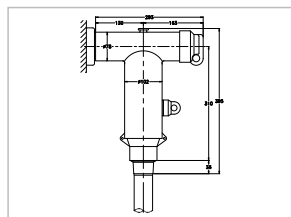
IBU-625



**36 kV BIL 200 Elbow connector 600A Interface 13  
IEEE 386**



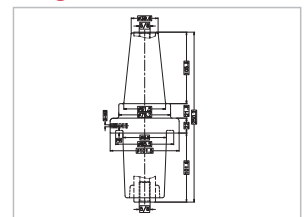
EC-636-XYZ



**36 kV BIL 200 Integral Bushing 600A Interface 13  
IEEE 386. XYZ=Cable Data ordering information**



IBU-636





# FICHA TÉCNICA TECHNICAL DATA

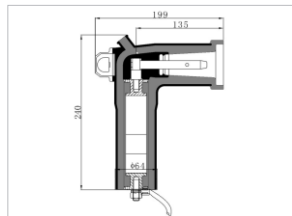
# ACCESORIOS PARA CABLE DE MEDIA TENSION MEDIUM-VOLTAGE CABLE ACCESSORIES IEEE 386 INTERFACE

Performance parameters of rear arresters				
Inducon Reference	DPS-215-X	DPS-I-215-X	DPS-225-X	DPS-636-X
Rated Voltage	17kV	17kV	26kV	36 kV
MCOV (Up to)	13.6kV	13.6kV	20.8kV	36 kV
Nomina Discharge Current	5kA	5kA	5kA	5kA
Impulse @ 8/20 $\mu$ s	45kV	45kV	66kV	120 kV

## 15 kV Elbow Arrester Interface 5 IEEE 386 X=MCOV



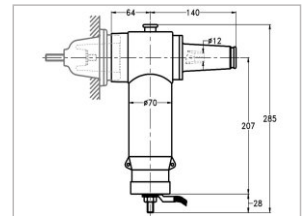
DPS-215-X



## 15 kV Elbow Arrester Interface 3 IEEE 386 + Insert termination Interface 5



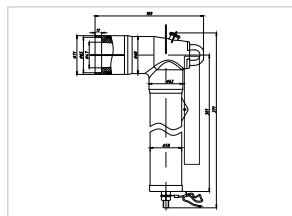
DPS-I-215-X



## 25 kV Elbow Arrester Interface 7A IEEE 386 X=MCOV



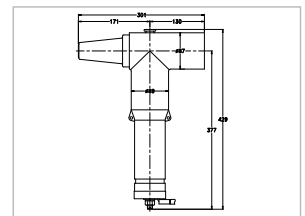
DPS-225-X



## 36 kV Elbow Arrester Interface 13 IEEE 386 X=MCOV



DPS-636-X



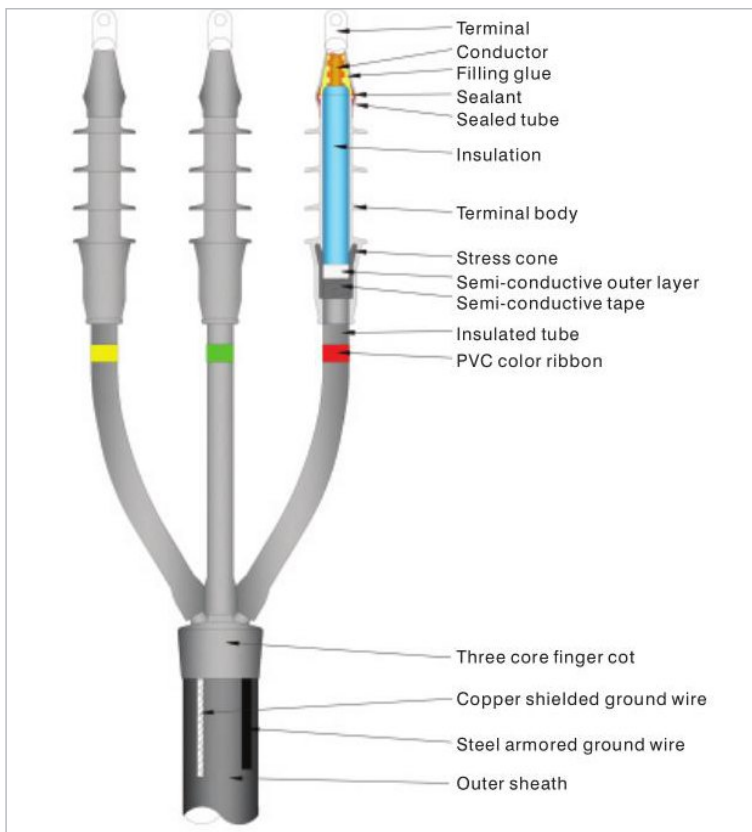
# FICHA TÉCNICA TECHNICAL DATA

# TERMINALES DE CABLE PARA INTERIOR Y EXTERIOR INDOOR AND OUTDOOR COLD SHRINK CABLE TERMINALS

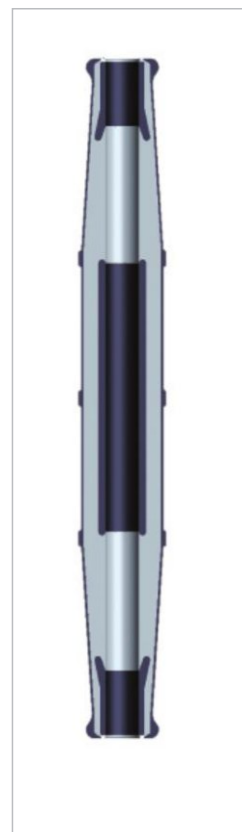
Adecuado para la protección de cables de entrada de líneas aéreas en exteriores e interiores. Utiliza un cono de tensión de caucho de silicona para aislamiento del accesorio, que mejora la distribución del campo eléctrico en el punto de corte del apantallamiento del cable.

Suitable for the protection of outdoor overhead line input cables and indoor transformers. Use silicone rubber tension cone for insulation of the accessory, which improves the distribution of the electric field at the cutting point of the cable shielding.

Voltage	Inducon Reference	Description
17kV BIL 95	SCI-217-X/Y	Indoor Cable Termination. X= Number of Poles / Y= Cable Data
	SCO-217-X/Y	Outdoor Cable Termination. X= Number of Poles / Y= Cable Data
	SCJ-217-X/Y	Outdoor Cable Joint. X= Number of Poles / Y= Cable Data
36 kV BIL 170	SCI-630-X/Y	Indoor Cable Termination. X= Number of Poles / Y= Cable Data
	SCO-630-X/Y	Outdoor Cable Termination. X= Number of Poles / Y= Cable Data
	SCJ-630-X/Y	Outdoor Cable Joint. X= Number of Poles / Y= Cable Data
36kV BIL 200	SCI-635-X/Y	Indoor Cable Termination. X= Number of Poles / Y= Cable Data
	SCO-635-X/Y	Outdoor Cable Termination. X= Number of Poles / Y= Cable Data
	SCJ-635-X/Y	Outdoor Cable Joint. X= Number of Poles / Y= Cable Data



**Cable Termination**



**Cable Joint**

